

Results of the Quantitative Study



H.J. Kaiser & B. Kraus

IPG- Institute for Psychogerontology-Erlangen

The sample of the quantitative study

- Age and gender distribution

Age groups			Gender		
	Frequency	Percent		Frequency	Percent
65-74	1816	55	Men	1190	36
75-84	1227	37	Women	2119	64
85+	266	8			
Total	3309	100,0	Total	3309	100

IPG- Institute for Psychogerontology-Erlangen

size

Our sample:

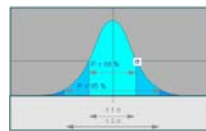
Coping successfully with
everyday problems



size

Differences of appraisal of mobility conditions:

•interpersonal



?variation of
data

•international



? less
problems



? more
problems

•between gender



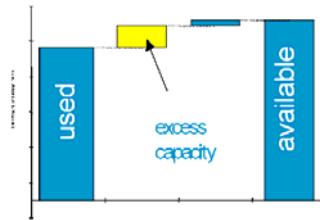
?more concerned
about fears

?less satisfied with
mobility conditions

?regarding
improvement of
mobility conditions
as more urgent

Aging – A process of adaptation

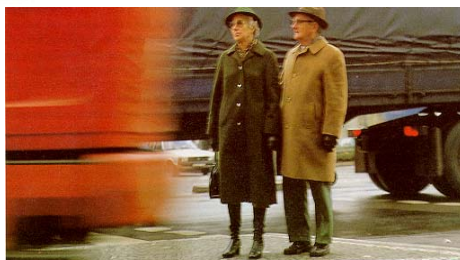
size



View of experts:

Adaptation *problems*

size



View of seniors:

Remaining *competencies*

size



Ageism...

size



View of experts:

Particular (negative) conditions of mobility



Obstacles,



barriers,



traps

size

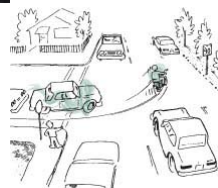
View of seniors:

Global, general,

and social

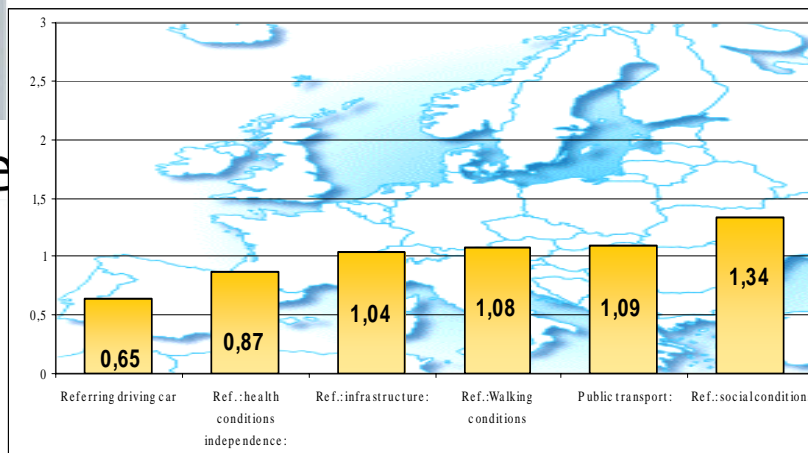


conditions

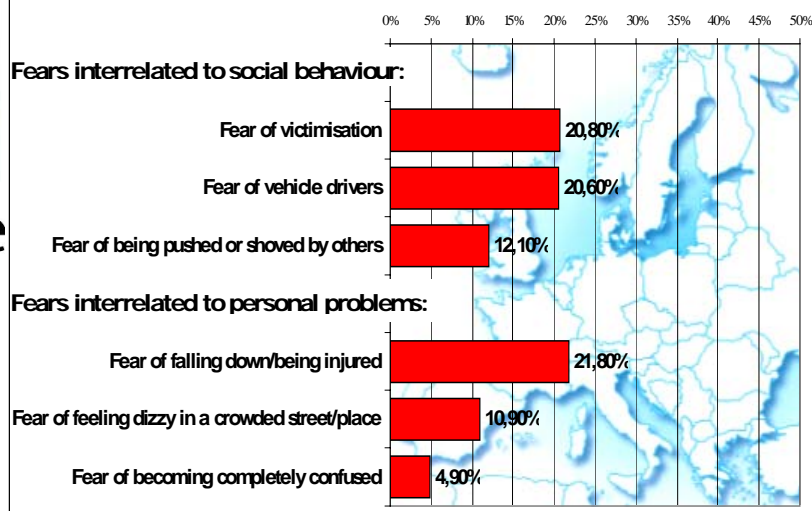


size

Evaluation of adverse conditions in traffic in thematic order



Domains of Fears as cluster



size

Ruthlessness of the drivers is a problem for:

75,4%

More safety efforts wish:

77,5%

Little confidence into the observance of speed limitings indicate:

82,1%

Campaigns, which carry age topics endorse:

89,3%

Negative attitudes towards older adults emphasize:

65,3%

0 10 20 30 40 50 60 70 80 90 100

SIZE 2004
N=3309

size

Domains of solutions and measurements

a) Apparent domains



Health care

size



Sufficient income

size



Elimination of physical barriers

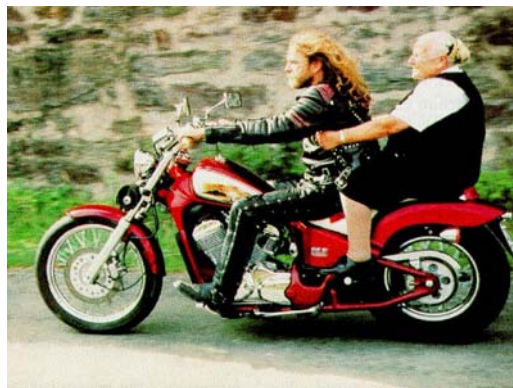
size



Domains of solutions and measurements

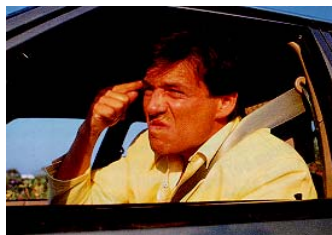
b) Less apparent domains

size



Reducing negative attitudes and inadequate social behaviour

size



Encouraging solidarity and cooperation

size



size



size

**Thank
you
for
your
attentiveness!**

